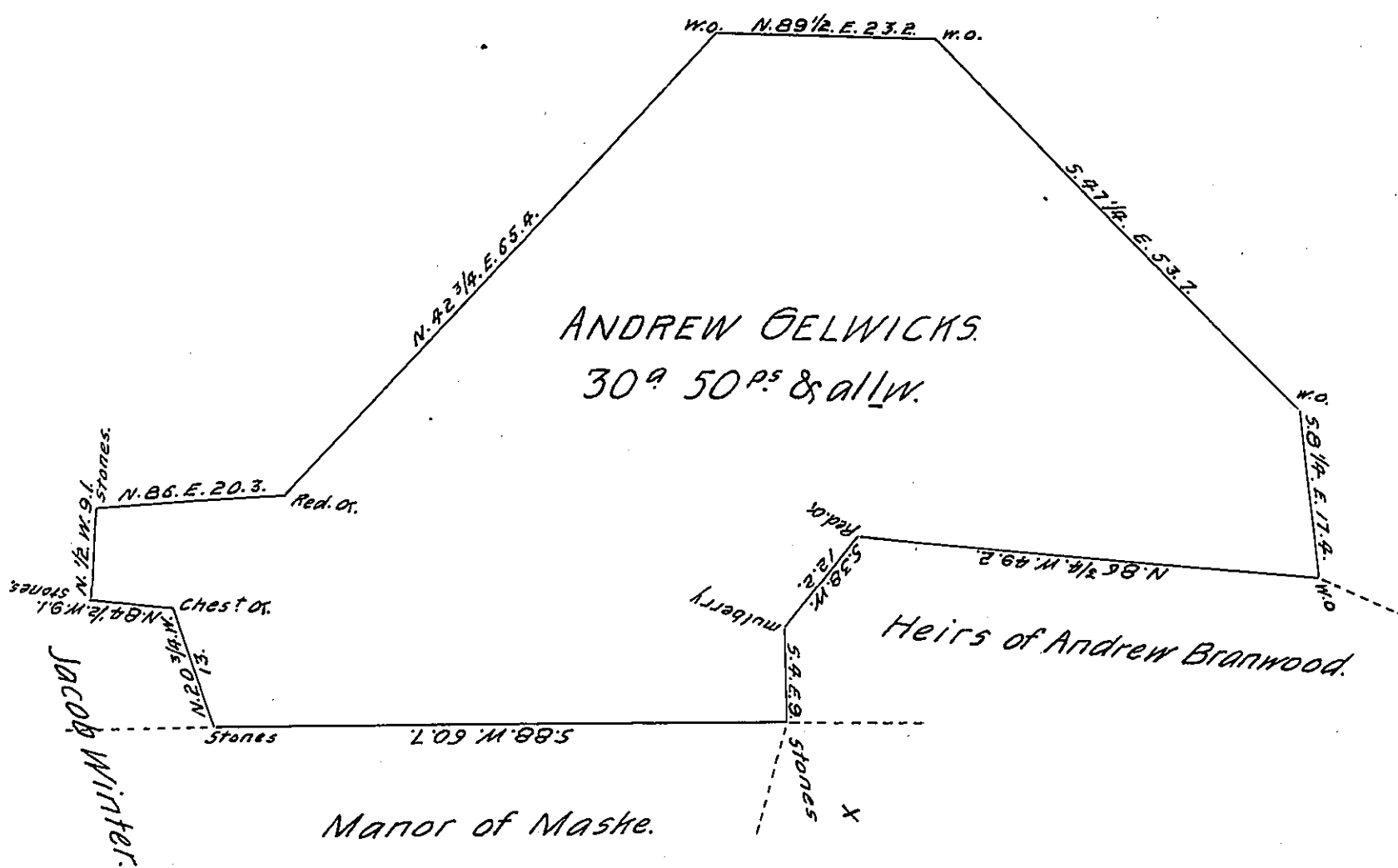


Heirs of John Hartman.



Situated in Franklin Township, Adams County Surveyed June 21<sup>st</sup> A.D. 1802. in pursuance of a warrant Dated 28<sup>th</sup> April 1802, granted to Andrew Gelwicks for 30<sup>a</sup> 50<sup>ps</sup> Containing 30<sup>a</sup> 50<sup>ps</sup> & allw. Improved 1<sup>st</sup> March A.D. 1780.

pf. Sam! Sloan. D.S.

To Sam! Cochran, Esq<sup>r</sup>  
Surveyor General.

IN TESTIMONY that the above is a copy of the original remaining on file in the Department of Internal Affairs of Pennsylvania, made conformably to an Act of Assembly approved the 16th day of February, 1833, I have hereunto set my Hand and caused the Seal of said Department to be affixed at Harrisburg, this fourteenth day of February 1905.

*Samuel Sloan*  
Secretary of Internal Affairs.